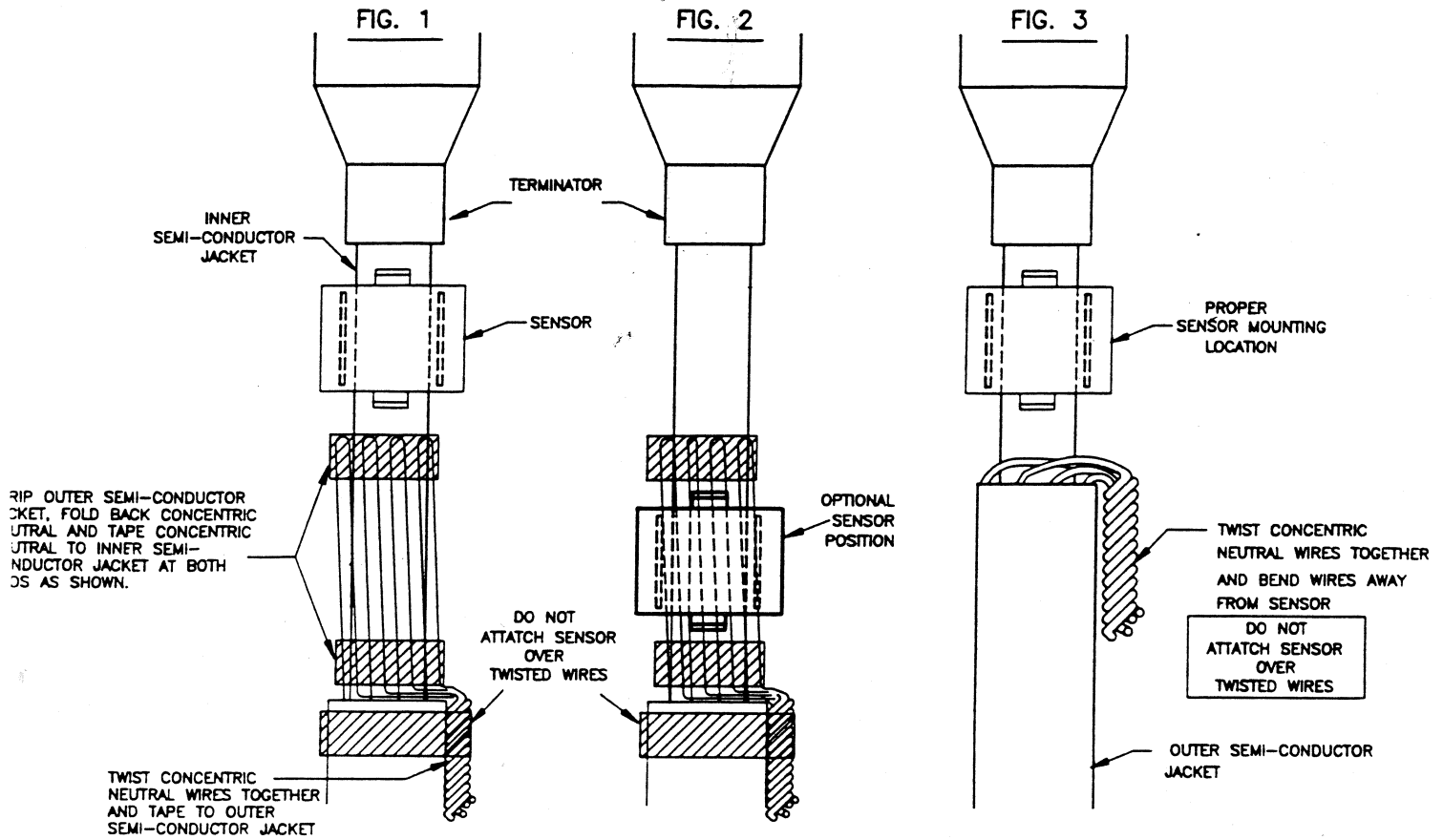


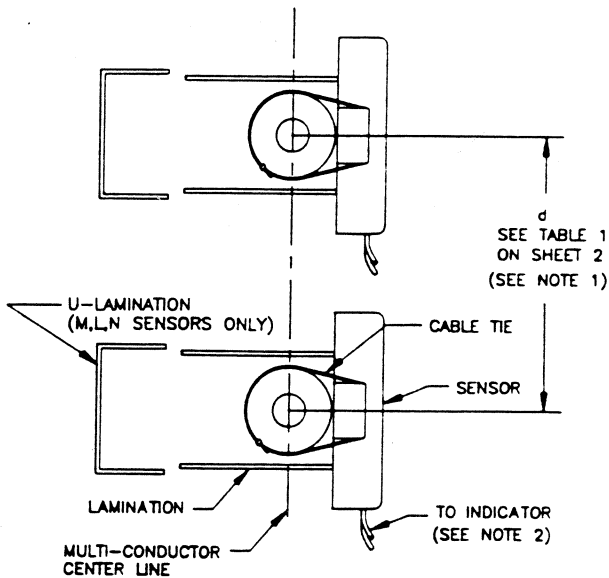
INSTALLATION INSTRUCTIONS FOR FISHER PIERCE SERIES 1514, 1515, 1518, 1519 AND 1547 FAULTED CIRCUIT INDICATORS

CONDUCTOR STRIPPING AND SENSOR MOUNTING (3 TYPICAL INSTALLATIONS)

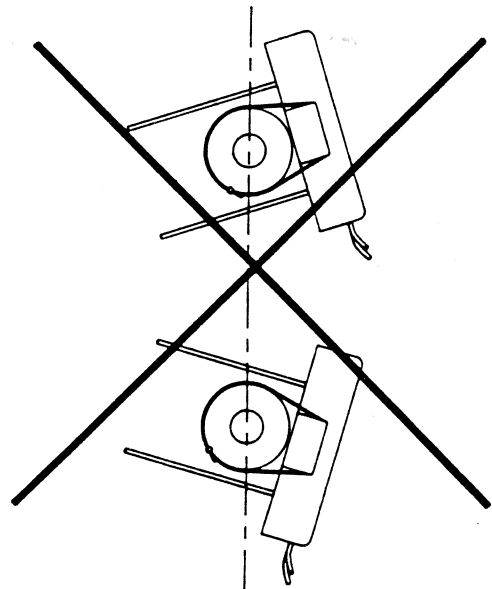


SENSOR TO CABLE MOUNTING - WITH ATTACHED OR REMOTE INDICATOR

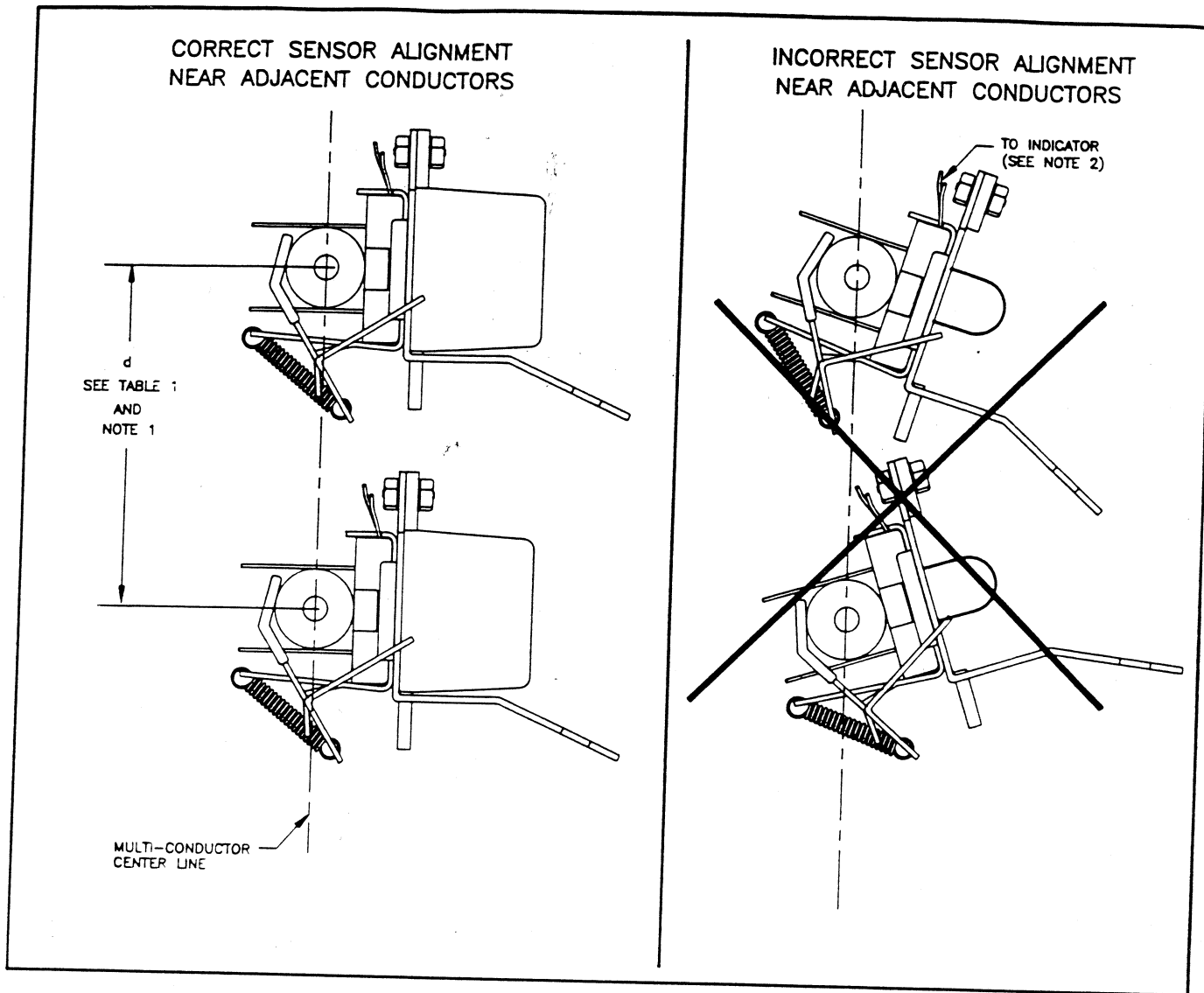
CORRECT SENSOR ALIGNMENT
NEAR ADJACENT CONDUCTORS



INCORRECT SENSOR ALIGNMENT
NEAR ADJACENT CONDUCTORS



HOT STICK TO CABLE MOUNTING - WITH OR WITHOUT ATTACHED INDICATOR



NOTES:

1. For installation on conductors spaced 12 inches or less, a sensor with U-lamination (closed split core) is recommended for best results.
2. **CAUTION:** When installing fault indicators comprised of a current sensor and a remote indicator, the sensor must be mounted on conductors that are fully insulated for the BIL of the system and have a grounded shield or semiconductive outer jacket on them. The fault indicator assembly leads are rated at 600Vac.

TABLE 1 does not apply for Model 1547 Series FCI's.

DISTANCE (d)	% ERROR IN FAULT TRIP POINT
6 INCHES	+0.5
5 INCHES	+1.0
4 INCHES	+1.5
3 INCHES	+2.5
2 INCHES	+4.0