

## POWERFLEX® VHF Radio Capacitor Control Switch



2635A/R Code Generator

The Fisher Pierce Series 2695D Microprocessor-based Digital VHF Radio Capacitor Switch is designed for one-way control of distribution switch-type capacitor banks. The Series 2695D switch is available in two output relay types - magnetically latching or momentary pulsed. The output relay is used to switch line voltage (120 Vac) to the open and close input control circuit of the capacitor bank. The switch is designed to operate both motor and solenoid type switch banks. The switch can be operated from existing radio based capacitor control systems or from the Fisher Pierce Model 2635 code Generator. Additional applications include multiple or series lighting as well as traffic control signals.

### Radio Switch Standard Features

- Microprocessor-based design
- Standard protocols available
  - 11 bit digital (Fisher Pierce)
  - REMS 100, 101, 102 (G.E.)
- Highly sensitive FM receiver
- Independent hardware watchdog timer
- Self-test on power up
- DIP switch selectable addressing
- Field selectable close inhibit timer
- Electromechanic and/or nonvolatile counter
- External or internal antenna
- LED indication of trip, close and receiver test
- Local operation switch for trip and close
- Local radio disable switch
- In line load protection fuse



Magnetically Latching Switch

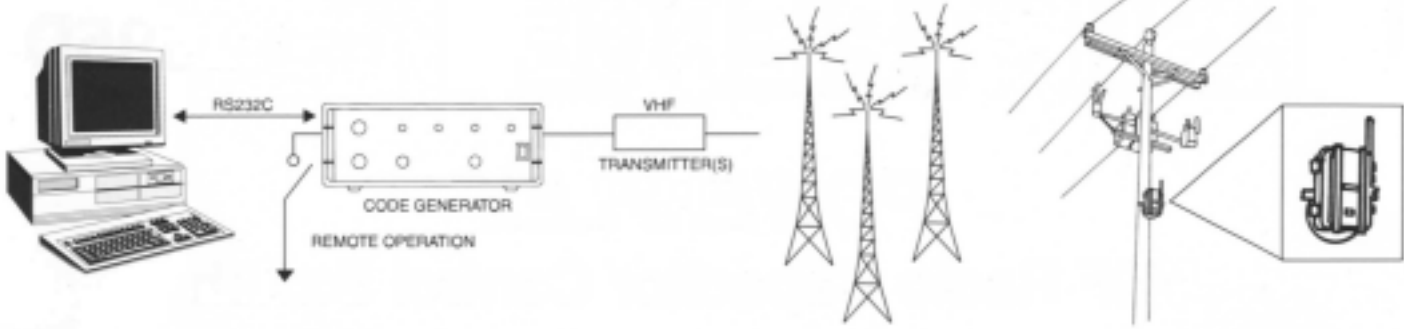
Momentary Pulsed Switch

The Fisher Pierce Model 2635A/R Code Generator is used to generate digital encoded messages and control VHF transmitter(s). The code generator can be preprogrammed for simple operation from external devices such as relays or panel switches or can operate from a PC via a standard serial communication port.

### Code Generator Features

- Compatible with Fisher Pierce 11 bit digital protocol
- Stores up to 512 digital command messages
- Monitors up to 5 input alarms
- Controls up to 5 output control lines
- Speaker with volume control
- Code generator status LEDs

**SERIES 2695D VHF RADIO CAPACITOR CONTROL SWITCH**



**Protocols Available for Radio Switch and Code Generator**

**Fisher Pierce 11 Bit Digital** - Standard protocol for existing Fisher Pierce capacitor switches. Direct replacement for Fisher Pierce Model 2695C-P.

**Additional Protocols for Radio Switches Only**

**REMS 100, 101, 102** - Direct replacement for General Electric radio capacitor control switches.

**Specifications**

**RADIO CONTROL SWITCH**

**Operating Voltage:** 120 VAC  $\pm$  15%

**Output Relay Contact Ratings:** SPDT

Latching Type: 10 Amps continuous;  
50 Amps, 6 cycles, 0.5 PF

Momentary Type: 10 Amps continuous

**Ambient Temperature Range:** -25° to +50°C

**Surge Withstand Capability:**

Input circuit passes ANSI/IEEE C62.45-1987.

**Isolation Voltage:** 1,500 Vac

(Input to output, isolated contacts)

**Weight:** 2.5lbs. nominal

**Size:** 10.51H x 7.94W x 3.12D inches

**Enclosure:** Glass reinforced Lexan.  
NEMA 3R.

**RADIO RECEIVER**

**Type:** Narrow band FM double conversion.

**Signal Sensitivity:** 20  $\mu$ V/meter (typical).

**Frequency Range:** 150 to 174 MHz

**Spurious and Image Rejection:** 40 dB

**Selectivity:** 50 dB at 20 kHz

**FCC Certified:** Part 15, subpart C.

**MECHANICAL**

**Mounting:** 4 stab meter socket type.

**Security:** Latch suitable for meter seal or padlock.

**LED Indicators:**

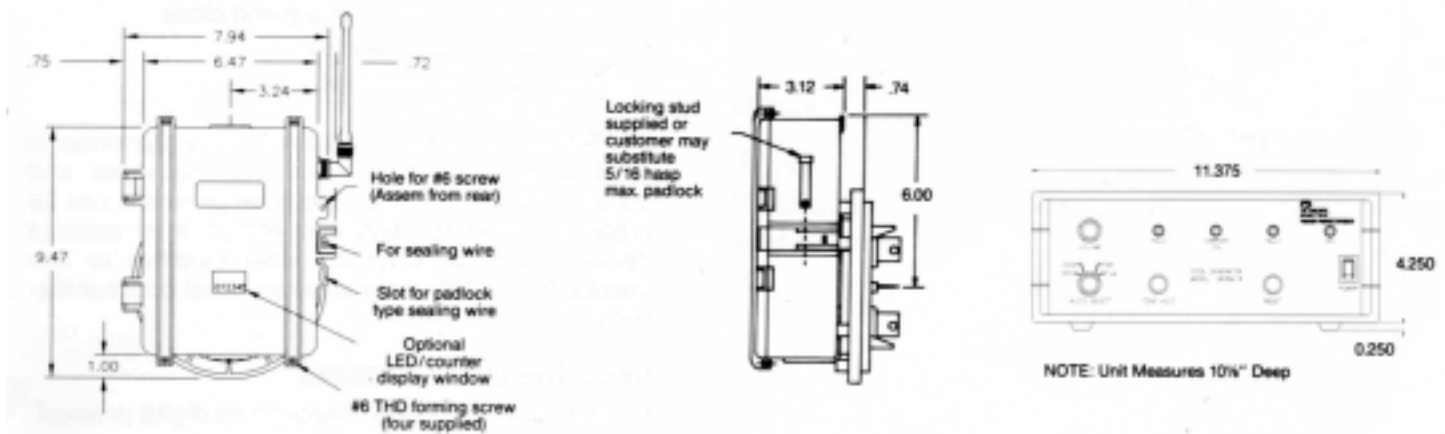
Red - close; green - trip (open); yellow - test.

**Local Toggle Switches:** For remote/local operation and manual capacitor operation.

**Ordering Information:** Please consult factory.

**Mechanical Data:**

All dimensions in inches



4000 East 116<sup>th</sup> St., Cleveland, Ohio 44105-4398 USA  
Tel: (216) 271-6600 · Fax: (216) 341-3615  
www.joslynhivoltage.com  
Email: info@joslynhv.com